



EDLIN & JARVIS  
ESTATE AGENTS



19 Furnace Close  
North Hykeham, LN6 9ZR  
Guide Price £180,000



## 19 Furnace Close

North Hykeham, LN6 9ZR

\*\*\*GUIDE PRICE £180,000 - £190,000\*\*\*

\*\*\*TUCKED AWAY\*\*\* Nestled in Furnace Close, North Hykeham, this delightful end-terrace house offers a perfect blend of modern living and comfort. Built in 2018, the property boasts a contemporary design that is both stylish and functional, making it an ideal choice for families or professionals seeking a welcoming home.

Upon entering, you are greeted by a spacious reception room that provides an inviting space for relaxation and entertainment. The layout is thoughtfully designed, allowing for easy movement and a sense of openness.

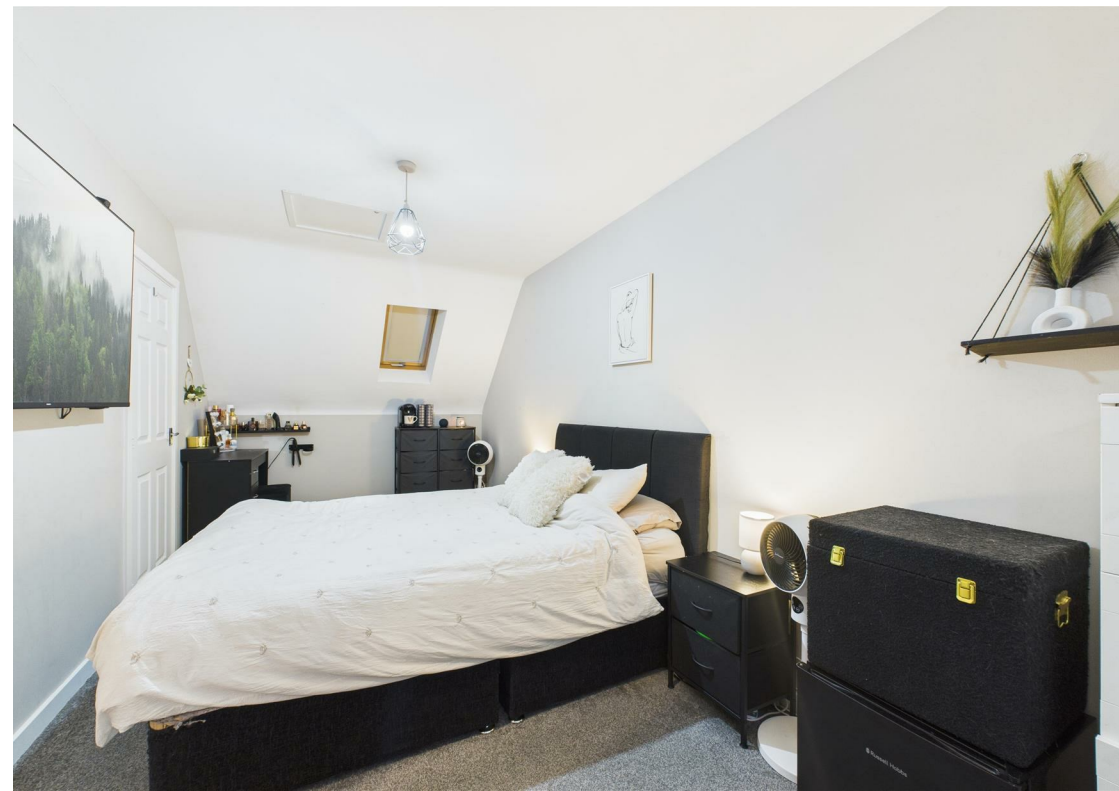
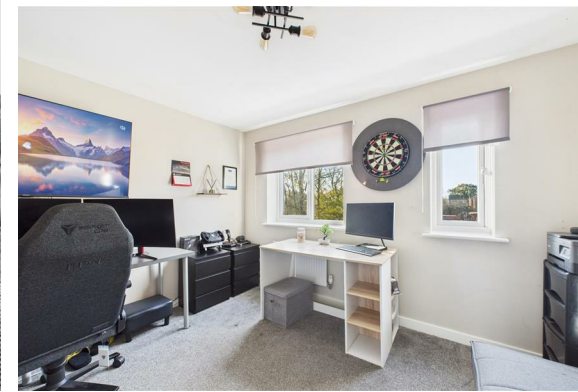
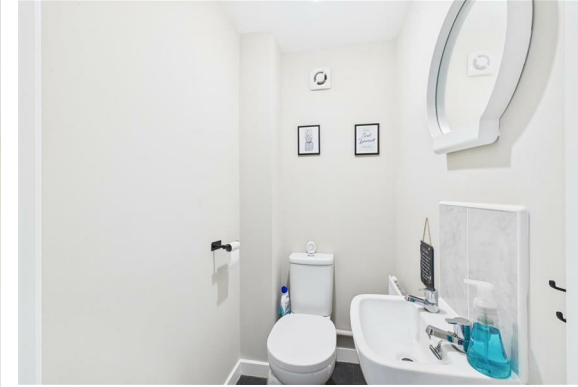
The house features three well-proportioned bedrooms, each offering a peaceful retreat for rest and rejuvenation. These rooms are versatile and can easily accommodate various furniture arrangements, making them suitable for children, guests, or even a home office. Other accommodation includes a kitchen diner, downstairs WC and a family bathroom.

Outside there is an enclosed easy maintenance rear garden perfect for al fresco dining and the front provides allocated parking spaces.

Situated in North Hykeham, residents will benefit from a friendly community atmosphere, with local amenities, schools, and parks within easy reach. The area is well-connected, providing convenient access to nearby cities and transport links.

In summary, this end-terrace house on Furnace Close is a fantastic opportunity for those looking for a modern, comfortable home in a desirable location. With its appealing features and thoughtful design, it is sure to attract interest from a variety of buyers.

Please note this property is leasehold and has 980 years remaining with ground rent charges of approximately £150py and service charges of £120py





**Lounge**  
14'8 x 11'9 (4.47m x 3.58m)

**Kitchen Diner**  
11'9 x 8'9 (3.58m x 2.67m)

**WC**  
4'3 x 3'4 (1.30m x 1.02m)

**Landing**

**Bedroom Two**  
11'9 x 10'4 (3.58m x 3.15m)

**Bedroom Three**  
11'9 x 8'9 (3.58m x 2.67m)

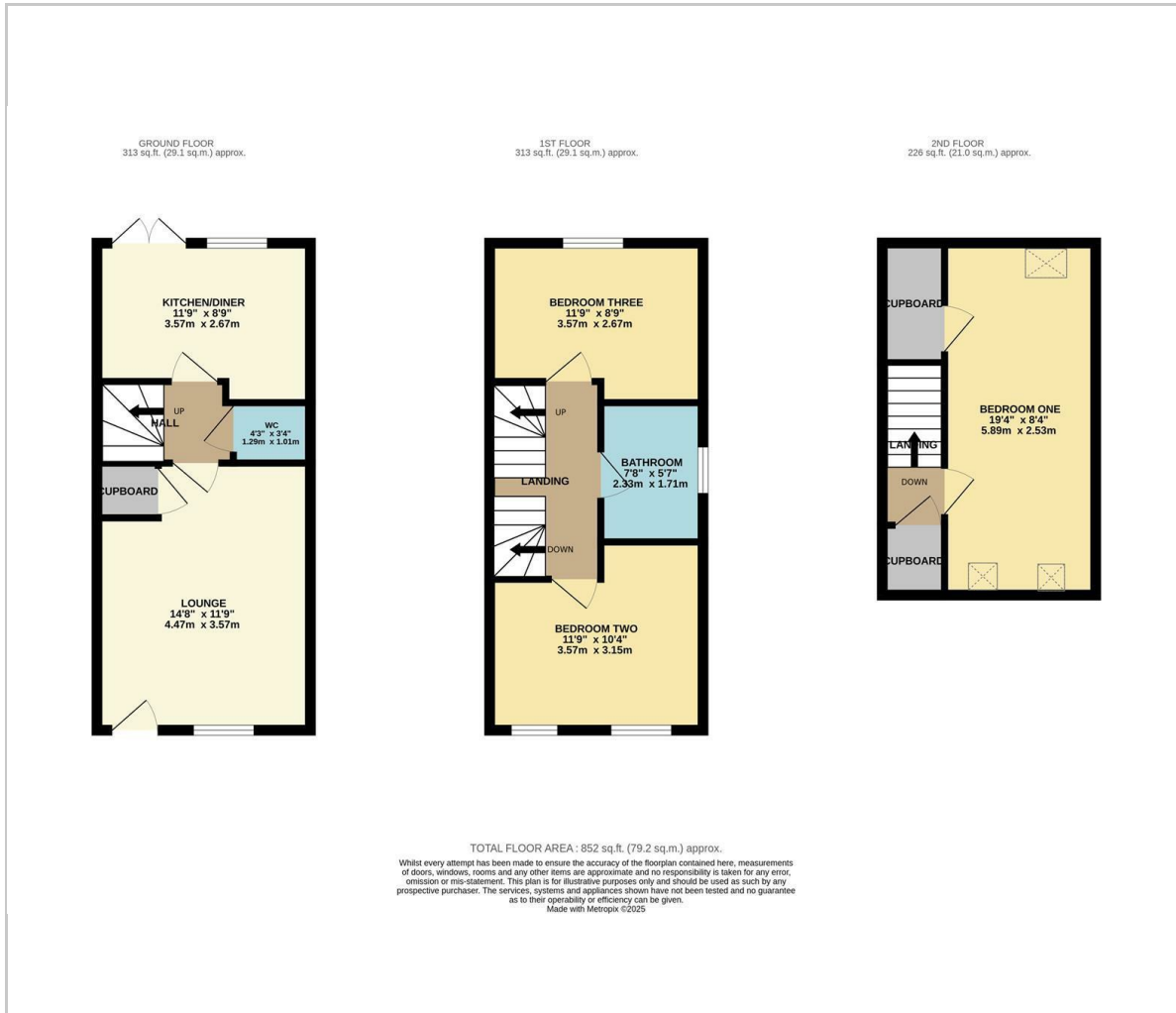
**Bathroom**  
7'8 x 5'7 (2.34m x 1.70m)

**Landing**

**Bedroom One**  
19'4 x 8'4 (5.89m x 2.54m)



## Floor Plan



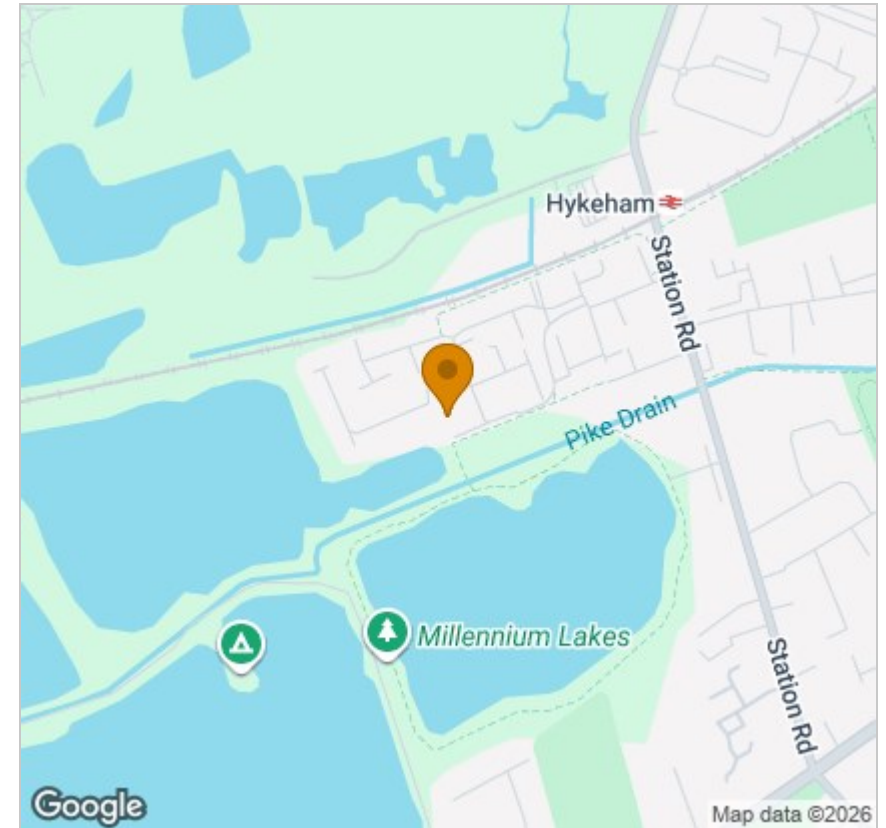
## Viewing

Please contact our Sales Office on 01636 555043 if you wish to arrange a viewing appointment for this property or require further information.

These particulars, whilst believed to be accurate are set out as a general outline only for guidance and do not constitute any part of an offer or contract. Intending purchasers should not rely on them as statements of representation of fact, but must satisfy themselves by inspection or otherwise as to their accuracy. No person in this firm's employment has the authority to make or give any representation or warranty in respect of the property.

36 Middle Gate, Newark, NG24 1AL  
 Tel: 01636 555043 Email: [enquiries@edlinandjarvis.co.uk](mailto:enquiries@edlinandjarvis.co.uk) <https://www.edlinandjarvis.co.uk/>

## Area Map



## Energy Efficiency Graph

